



Criteria		Mesa Mountain		
1	1000 Hr fuels <12%	Current	Trigger	Criteria Met
		1000 hrs=	11	Yes
			Yes	Yes
Criteria A - Mesa Mtn		Mesa Mountain		
2	ERC is > 80%	Current	Trigger	Criteria Met
	W-Grass/Shrub=11	11	No	Yes
	X- Brush=64	87	Yes	
	Y - Timber=60	53	No	
	Z-Slash= 105	109	Yes	
Criteria B - Sandoval		Sandoval Mesa		
	ERC is > 80%	Current	Trigger	
	W-Grass/Shrub=9	9	No	
	X- Brush=80	78	No	
	Y - Timber=48	50	Yes	
	Z-Slash= 95	102	Yes	
Criteria A - Mesa Mtn		Mesa Mountain		
3	BI>80%	Current	Trigger	Criteria Met
	W-Grass/Shrub=43	40	No	Yes
	X- Brush=186	178	No	
	Y - Timber=38	37	No	
	Z-Slash= 95	97	Yes	
Criteria B - Sandoval		Sandoval Mesa		
	BI>80%	Current	Trigger	
	W-Grass/Shrub=34	35	Yes	
	X- Brush=155	160	Yes	
	Y - Timber=31	36	Yes	
	Z-Slash= 90	96	Yes	

4	Durango Zone Fire Danger Operating Plan Calculator Indicates Fire Restrictions Warranted For Lower Zone Fire Danger Rating Area (FDRA) - Within 6 day forecast	Criteria Met	Yes
5	Fire Danger adjective class is very high or extreme	Criteria Met	No
6	Fire occurrence is impacting available resources	Criteria Met	No
7	Local Preparedness level is 3 or above	Criteria Met	No
8	Local area is receiving a high occurrence of fires and human caused risk is expected to increase	Criteria Met	No
9	Adverse weather conditions and risks are predicted to continue	Criteria Met	Yes
10	Implementation of existing fire restrictions are not adequately reducing human-caused fires	Criteria Met	No
	Total	5	Criteria Met
		5	Criteria NOT met

**Justification/Summary**

Green up has been short lived and drying and curing of fine live fuels is occurring. Stage I Fire Restriction criteria suggest entering when four or more criteria are met. Given the upcoming Bear Dance and Memorial Day weekend and increased public risk, Stage I Fire Restrictions are recommended to begin Friday, May 22, 2026 at 0600 AM.

Prepared by RICHARD GUSTAFSON Digitally signed by RICHARD GUSTAFSON  
Date: 2026.05.19 08:06:31 -06'00'

Richard Gustafson, Fire Management Officer

Date 5/19/2026

## **2026 FIRE RESTRICTION CRITERIA GUIDELINES**

1. Measured 1000-hour fuels are 12% less.
2. Seasonal Energy Release Component (ERC) is above 80%.
3. Seasonal Burning Index (BI) is above 80%.
4. Durango Zone Fire Danger Operating Plan Calculator Indicates Fire Restrictions Warranted for Lower Zone Fire Danger Rating Area (FDRA) – Within 6 Day forecast
5. Fire danger rating adjective class is "Very High" or "Extreme"
6. Fire occurrence is impacting available suppression resources.
7. Local area preparedness level is 3 or above.
8. Local area is receiving a high occurrence of fires, and the human-caused risk is expected to increase.
9. Adverse fire weather conditions and risks are predicted.
10. Implementation of existing fire restrictions is not adequately reducing human-caused fires.

Stage I - If four or more of the above conditions exist, consider initiating Stage I Restriction.

Stage II - Consider initiating a Stage II Restriction after a Stage I Restriction has been imposed and six or more of the above conditions exist.

Stage III - Consider initiating a Stage III Restriction after a Stage II Restriction has been imposed and seven or more of the above conditions exist.

### **PROPOSED GUIDELINES FOR RESCISSION**

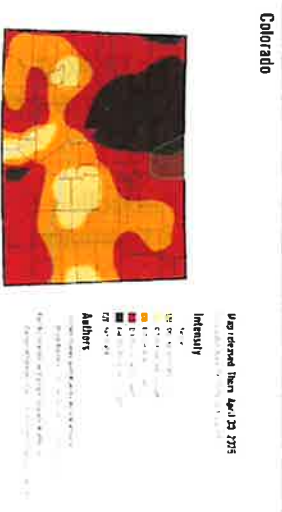
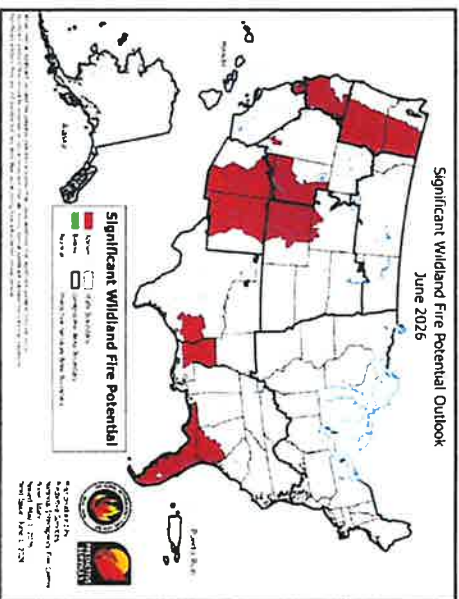
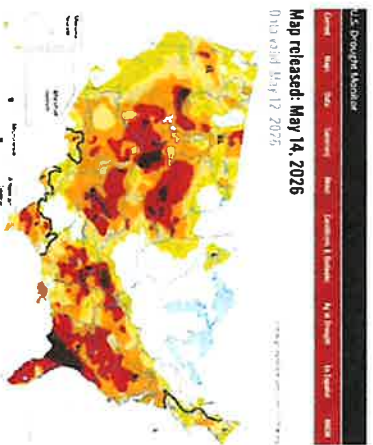
The above fire restriction guidelines would also serve as criteria for rescinding restrictions.

**RESCISSION FROM STAGE III TO STAGE II:** Reduction to six or fewer of the above conditions will apply for a period of 7 days with a predicted trend toward continued improvement.

**RESCISSION FROM STAGE II TO STAGE I:** Reduction to four or fewer of the above conditions will apply for a period of 7 days with a predicted trend towards continued improvement.

**RESCISSION FROM STAGE I:** Reduction to three or fewer of the above conditions will apply for a period of 7 days with a predicted trend towards continued improvement.

# Southern Ute and Ute Mtn Reservations Current and forecast Fire Danger





IN REPLY REFER TO:  
Fire Management

United States Department of the Interior  
UNITED STATE WILDLAND FIRE SERVICE  
Southern Ute Agency  
575 CR 517  
Ignacio, Colorado 81137-0315

## NEWS RELEASE

# SOUTHERN UTE RESERVATION ENTERS STAGE I FIRE RESTRICTIONS

Ignacio, CO,

Due to a historically low winter snowpack and recent hot, dry and windy conditions, Stage I fire restrictions will be implemented for all trust lands throughout the Southern Ute Indian Reservation. The overall drought condition creates the potential for large fire development, and any ignition could grow rapidly. Fire Restrictions for the General Public include:

### STAGE I General Public:

#### Prohibited acts:

- 1.OPEN BURNING. Burning of trash and/or yard waste is prohibited.
- 2.AGRICULTURAL BURNING. Burning of crop land, fields, rangeland, debris burning, slash piles, prescribed burning and weed burning are prohibited.
- 3.CAMPFIRES. Building, maintaining or using a warming fire or campfire outside of officially designated or developed camp sites is prohibited. Fire restrictions do not include charcoal fires (in suitable containers) for barbeques or fires for sweat ceremonies; however, such fires are not to be left unattended and are to be fully extinguished after use.
- 4.FIREWORKS. Possession, discharging or use of any type of fireworks is prohibited.

There are Fire Restrictions for Commercial and Industrial operations as well, please contact your Tribal representative for more detail on Fire Restrictions.

For a copy of the fire restrictions or more information regarding fire restrictions, please visit Southern Ute Agency Fire Management at 575 County Road 517, Ignacio, CO 81137.

**Stage I Restrictions will begin at 06:00 AM, Friday, May 22, 2026.**

